

## ***Octane Time Attack Event Rules and Regulations***

Octane Time Attack is an inclusive car enthusiast community focused on educating newcomers to the motorsport world and refining the racecraft of our advanced drivers while providing a social environment. Our primary goal is the safety of ALL our drivers and participants.

**1. Requirements for the Event** - All registered drivers must conform to these requirements

**1.1 Vehicle Eligibility** - Drivers must enter a vehicle that passes technical and safety inspection.

**Harris Hill Raceway- No electric vehicles are allowed, and the vehicle cannot surpass 85 sound decibels at the property line and 96 sound decibels on track.**

**Atlanta Motorsports Park- The vehicle cannot surpass 98 sound decibels at the property line and 96 sound decibels on overcast days.**

**1.2 Driver Eligibility** -

- a. All drivers must possess a valid driver's license.
- b. All drivers must be at least 18 years of age
  - i. 16-year-old drivers may participate with a parental waiver from both parents or legal guardians and must have track experience.
- c. Must have an SA2015 or newer helmet. We have a limited amount of loaners. First come, first serve.
- d. All drivers must read the rules and sign the waivers.
- e. All drivers must attend a mandatory driver's briefing on the day of the event.

**1.3 Registration** - Drivers must register & pay at least 48 hours in advance and provide all necessary documentation, such as emergency contact, track insurance (optional), if applicable verifiable motorsports experience for proper classing.

**1.4 Code of Conduct** -

- Participants must adhere to a code of conduct that promotes fair play, respect, and a positive atmosphere throughout the event.
- Follow Harris Hill Raceway, Road Atlanta, and/or Atlanta Motorsports Park policies.
- Drivers are strictly prohibited from participating on the track while under the influence of alcohol or controlled substances. Should you be perceived as being under the influence, the OTA reserves the right to disqualify you from participation without providing a refund.
- Aggressive driving, unsportsmanlike conduct, or intentional interference with other participants is strictly prohibited and will get you disqualified or expelled.
- **NO RACING ALLOWED** – This is a high-performance driving education event - NOT a racing event.

**1.5 Insurance** - Drivers are responsible for ensuring their vehicle is adequately insured for the event. ***Harris Hill Raceway, Road Atlanta, Atlanta Motorsports Park, and Octane Time Attack (Scott Dollahite Racing LLC) are not responsible for any damage or accidents to the car, driver, and/or attendants.***

**1.6 Media and Promotion** - Participants agree to allow the use of their name, image, and vehicle for event promotion and media coverage.

**1.7 Event Cancellation** - We understand that unexpected situations can happen before an event, and we want to help. To ensure fairness for all participants due to our limited availability, we have a cancellation policy in place. We will issue a credit for a future event and kindly ask for a \$50 fee for cancellations made 10 days prior to an event, as we may have other drivers on the waitlist. Unfortunately, we are unable to issue credits for cancellations made 5 days or fewer before an event. We appreciate your understanding and hope to see you at one of our upcoming events.

Octane Time Attack reserves the right to cancel or reschedule the event due to unforeseen circumstances. In the event of cancellation, registration fees will be credited toward a future event.

## **2. Preparing for the Event -**

**2.1 Helmets – ALL PARTICIPANTS MUST WEAR A HELMET.** SA2015 or newer helmet is required. We have a limited amount of loaners. First come first serve. Please contact Octane Time Attack Staff for more information.

### **2.2 Waivers –**

- Prior to participating in any Octane Time Attack Event, all participants must complete, sign, and return the Release and Waiver of Liability, Assumption of Risk, Indemnity, and Arbitration Agreement. Copy of this form are available at [octanetimeattack.com](http://octanetimeattack.com)
- Upon arrival to the track, anyone (all event staff, drivers, crew, friends, family, etc.) entering the track will be required to sign the track on-site waiver.

**2.3 Tech Inspection Form** – All vehicles must undergo a technical inspection to ensure they meet safety and performance requirements. Any modifications must comply with the event regulations. Prior to participating in any Octane Time Attack Event, all participants must complete, sign, and return the Octane Time Attack Tech Inspection Form and Waiver. A copy of the form is available at [octanetimeattack.com](http://octanetimeattack.com)

**Please note: The driver is responsible for completing and providing proof of tech inspection prior to the event. Without proof of inspection, the vehicle will not be allowed on track. Octane Time Attack and Harris Hill Raceway, Road**



**Atlanta, and/or Atlanta Motorsports Park reserves the right to disqualify any car that its staff considers too dangerous or too loud to drive at the facility.**

**2.4 Convertible/Open Top Vehicles** – In the interest of safety, it is imperative to acknowledge that driving or riding in a convertible or any open-top vehicle poses an increased risk of severe injury or fatality, even when equipped with safety measures. Any open-top vehicle seeking participation in an event must be furnished with an approved roll bar or roll cage. Open-top vehicles featuring factory-installed rollover protection are permitted to operate with the top down, although arm restraints are required. Vehicles lacking factory rollover protection are mandated to be outfitted with a roll bar or cage, or a suitably fitted and designed hardtop. The responsibility for the installation and upkeep of a suitable roll bar or cage lies solely with the driver. Octane Time Attack does not provide any express or implied guarantees or warranties regarding the safety or suitability of roll bars, cages, or any other safety equipment and does not undertake inspections of such equipment. It is advisable that drivers and vehicle owners seek advice from relevant experts when making decisions about the construction and maintenance of these safety devices. Octane Time Attack retains the right to prohibit certain convertible or open-top vehicles from accessing the track.

**2.5 Tire Requirements** – All vehicles are required to have tires less than 4 years old with no cracks.

**2.6 Numbers** – Your entry fee includes two door number plates with numbers as well as the front windshield banner. They will be given to you when you check in at the event. Place the plates on the driver's and passenger's side doors in the middle of the door. Drivers will not be permitted on the track without the plates/numbers and windshield banner. **Please note that numbers will be assigned on a first-come-first-serve basis. You may request up to three numbers during registration, and we will confirm your assigned number within 72 hours.**

**2.7 Attire** – All drivers must wear **Closed-toed and closed-heeled shoes, and (at a minimum) a short-sleeved shirt** -cotton or wool recommended, *NO synthetic fibers*. You are required to wear a full Nomex driver suit if you are driving in a non-production or purpose-built racing vehicle.

**2.8 Food & Water** - Food and water are allowed in the facility. Food for sale/donation will be available for the attendees. **Stay hydrated** and bring extra water during the hot season.

### **3. During the Event -**

**3.1 Safety** – Our events prioritize a safe, respectful, and inclusive environment. Any participant engaging in rude, racist, disrespectful behavior, or driving in an unsafe manner will be subject to penalties violations, including time penalties, disqualification, or expelled from the event without refund at the discretion of Octane Time Attack Staff.



**3.2 Passengers & Ride Alongs – No passengers allowed.** Your family and friends are welcome to the Octane Time Attack event to cheer you on from the sidelines. *We believe safety comes first, and we ask that they remain in the spectator area.*

**3.3 Classes** – Drivers will be initially assigned to their **run groups** based on track experience, tires, and car stats/mids. **Please confirm your class by checking the [OTA Classing Calculator on the website](#).** If you have any questions about why you were assigned to the group, consult with an Octane Time Attack staff member.

- Street
- Limited
- Modified
- Unlimited

**Advanced** - Needs to provide proof of track experience and be approved by the OTA. **Please note that in order to participate in Road Atlanta and Atlanta Motorsports Park, you MUST be solo qualified by an HPDE organization, hold a TT license from SCCA or NASA, or be approved by Scott Dollahite Racing.**

**Novice (H2R only)** - Has never driven at Harris Hill Raceway, has less than 5 HPDE days, or has not been on track in the last 3 years. Octane Time Attack will provide a short lead follow-lap session, followed by an in car coaching session with an OTA driving instructor in the passenger seat. *\*\*To qualify for the Most Improved Novice, you must have signed up as a Novice for the entire season.*

*\*\*If you have track experience but it's your first time at Harris Hill Raceway, please register as a Novice. An OTA Coach will assess your performance and may promote you to the Advanced category. Any points earned as a Novice will be transferred to your Advanced standing.*

**3.4 MANDATORY Drivers Meeting** – After completing check-in, you must attend the **MANDATORY drivers meeting on time.** *Once the meeting starts, a \$20 fee will be incurred for late arrival. Novice drivers who miss both the driver's meeting & the track orientation lap will be unable to compete and will not receive a refund. Check-in will close 10 minutes before the start of the drivers' meeting.*

**3.5 Flags** – The flags are to allow the Octane Time Attack staff members to relay information about what is happening on the track to the competitors. There are two types of flags, *command and information.* **Be aware of all flagging stations.**

Failure to obey flags, track officials, or Octane Time Attack Staff instructions at any time will result in a penalty to the driver at Octane Time Attack discretion, including but not limited to loss of track time or being expelled from the event without refund. If you are uncertain whether a flag is directed at you, you should assume that it is.



**Get familiar with the flags and their meaning. We will review them during the mandatory Drivers Meeting as they contribute to the safety and fair play in the Octane Time Attack event.**

## COMMAND FLAGS:



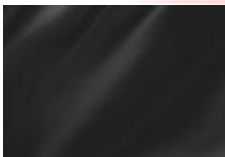
**Red** – An incident has occurred requiring the dispatch of emergency vehicles. **SLOW DOWN, NO PASSING, PROCEED TO PIT.** Cars can slowly pass emergency vehicles.

**Yellow, Standing** – Reduce speed- Something has happened ahead of you. The incident is off the track surface or off the racing line. **No passing** until you reach the next green flag station.



**Yellow, Waving** – Dramatic reduction of speed. Something has happened ahead of you and is on the track surface or on the racing line. *Great Danger!* Slow down and be prepared to take evasive action or stop. **Absolutely no passing** until the next green flag station.

**Double Yellow Displayed at All Station** – Indicates the entire course is under yellow condition. **SLOW DOWN & NO PASSING.** Cars can slowly pass emergency vehicles. Cars can also pass other cars that are disabled or otherwise cannot keep the pace as signified by a raised arm out the window.



**Black** – You have been observed driving in an unsafe or improper manner. If this flag is displayed with your number, **the driver must acknowledge the flag** and proceed to enter the pits at the next opportunity to consult with the Octane Time Attack staff member. If you ignore this flag you will be assessed a penalty, including but not limited to loss of track time or expelled from the event.

**Black Flag at All Station** – The black flag may be waved at all stations. All vehicles must enter the pit lane at the first opportunity. Failure to follow this instruction will result in loss of track time.



**Black W/ Orange Center or Meatball** – There is something mechanically wrong with your car. Proceed carefully to the pits. Avoiding the racing line whenever possible. Consult with the Octane Time Attack staff member in the pit lane.



## INFORMATION FLAGS:



**Green** – Track is hot. The course is clear, and passing is allowed.



**Yellow W/ Vertical Red Stripes** – Drive with caution and be prepared to respond accordingly. Passing is allowed. Slippery conditions or debris on the track ahead, possibly oil, coolant, dirt, an errant animal, and/or parts of a fellow driver's car. This flag will be displayed for two laps and then removed. Removal of the flag does not mean the surface condition is resolved.



**Blue W/ Yellow Stripe** – Traffic flag. A faster car is behind you, so give a point-by at the next passing zone. Acknowledge the blue flag with a small wave to both the worker and the following car. This courtesy prevents tailgating, mirror driving, and promotes safety.



**White At Corner Station**- You are approaching a safety/slow-moving vehicle on track or an emergency vehicle. Slow down when approaching the safety/slow-moving vehicle and give as much room as safely possible when passing. After passing the safety/slow-moving vehicle, you can safely increase your speed again.

**White At Start/Finish**- Last timed lap before you receive the checkered flag.



**Checkered** - The session is over. Do not immediately lift or brake. Begin a cool-down lap after passing start/finish by gradually slowing to approximately 60% speed. Cool-down is defined as reducing your speed after start/finish, higher gear/lower revs, and limit brake usage. Proceed to pit.

**3.6 Pit Signals** – When entering the pit lane from the track, drivers must raise their arm out of their window signaling that you're coming into the pits. Speed limits in the pit area must be adhered to at all times. *Only authorized personnel are allowed in the pit lane during the event.* **USE THIS HAND SIGNAL ANYTIME YOU ARE LEAVING THE TRACK, REGARDLESS OF WHETHER OR NOT THE SESSION IS OVER.** A driver entering the pit lane may be passed by cars continuing on the track.

**3.7 Windows** – Both the front windows on the passenger and driver sides must be fully lowered. If your vehicle's windows are fixed or the window regulators are non-functional, please seek approval from the Octane Time Attack staff.



**3.8 Emergency Procedure** - Drivers must follow emergency procedures in the event of an accident or other emergencies. *Emergency contact information must be provided during registration.*

## 4. Octane Time Attack Sessions-

### 4.1 Format –

#### **Harris Hill Raceway**

- a. Drivers will have a 10-minute practice session based on their assigned group.
- b. Drivers will have 2 specific time slots for their time attack sessions.
- c. The time attack sessions will consist of 3 timed laps.
- d. At the end, we will recognize the fastest lap in each class, the most consistent driver overall, and the most improved novice driver.

#### **Road Atlanta & Atlanta Motorsport Park**

- a. Drivers who have never been to the track will get 2 lead-follow laps for the first session to learn the layout.
- b. All drivers will get 3 rounds of 15-minute timed sessions for the Time Attack competition.
- c. Only the fastest time from all 3 sessions will count towards the results.
- d. At the end, we will recognize the fastest lap in each class, the most consistent driver overall, and the most improved driver.

**4.2 Start Procedure** - Vehicles must enter and exit the track only during designated times. **Be attentive to your phone**, as this is how we will communicate throughout the event.

### 4.3 Timing and Scoring

**Harris Hill Raceway-** Official timing equipment will be used to record lap times. The timing equipment will be located at the back straight and will be triggered automatically once the driver crosses the start/finish line. We will recognize the Fastest Lap in EACH class, the Most Consistent, and the Most Improved Novice Overall.

**Road Atlanta & Atlanta Motorsport Park-** Timing and scoring will be recorded with driver-specific transponders. The timing loop is located on the front straight at the start/finish line. We will recognize the fastest lap in each class, the most consistent driver overall, and the most improved driver.





**4.4 Practice Session** - "Point by" passing is mandatory in all groups. The "point by" is accomplished by pointing to the side you want another driver to pass you on. All passes must be initiated by the driver being passed by giving a clear and visible "point by" to the passing driver. **NO EXCEPTIONS.** Please make your "point by" as early as possible in your allowed passing zones. Track-specific passing zones will be covered in the mandatory Driver's Meeting.

If at any time you see a blue flag, you should assume it is for you and point the driver behind you by. Aggressive driving or passing without a "point by" is prohibited and will result in a penalty to the driver at the discretion of Octane Time Attack, up to and including being expelled from the event without a refund.

#### **4.5 Timed Runs -**

**Harris Hill Raceway-** The start/finish is located on the back straight between Turn 5 and Turn 6. Please get up to speed as safely and quickly as possible in order to prevent a traffic jam. Your timed laps start as soon as you cross the start/finish line. After your first timed lap, you will see a white flag at the start/finish flag station on your next lap, followed by the checkered flag. **After you get the checkered flag, you will enter the pits on that lap. If you miss pit lane after checkered, then your fastest time will be deleted.** Exceeding track limits may also result in penalties, including lap time disqualification.

**Road Atlanta & Atlanta Motorsport Park -** The 15-minute session timer will start as soon as the cars are released on track. Lap times will start recording as soon as the driver crosses the start/finish. After you receive the checkered at the start/finish, you will complete that lap and enter the lane. The driver's fastest time of the day will count for the final result.

**4.6 Off-Track Incidents** - In the event that all four wheels of your vehicle deviate from the track, it is imperative to promptly proceed to the pit lane for a thorough inspection of your car. Failure to adhere to this protocol may result in the display of a black flag, and the potential forfeiture of track time, as determined by the Octane Time Attack Staff.

**4.7 Damage to Track Property** - Drivers bear full responsibility for any harm caused to the property, including, but not limited to, walls, Armco barriers, and landscaping.





## **Vehicles, and Driver Safety Gear Rules and Recommendations**

*Drivers participating in Octane Time Attack must adhere to the Rules and Regulations regarding helmets and attire. Moreover, strict adherence to the safety guidelines outlined below is highly recommended. Regardless of any safety modifications made to the vehicle and the equipment used, it is paramount to understand that each component within the vehicular safety system is designed to work collectively. Modifying individual safety components from factory specs may lead to hazardous situations. Octane Time Attack reserves the right to prevent any vehicle from accessing the track if a staff member deems it unsafe in any manner.*

Please be aware that track requirements are subject to variation, and individual track regulations take precedence over any suggestions or guidelines provided below.

**1. Regular production vehicles** - This section pertains to vehicles that possess a VIN (Vehicle Identification Number) obtained through regular means from the factory and have not undergone extensive modifications from their original form or configuration. This includes instances where some or all chassis components have been added or replaced with a tube frame or other substantial alterations.

- a. All drivers must adhere to the Octane Time Attack Rules and Regulations pertaining to the mandatory use of appropriate helmets and attire.
- b. It is strongly advised that drivers utilize a head and neck restraint that is compatible with the seat belts or harnesses installed in their vehicles.
- c. Vehicle seats should use the factory seats and mounts OR conform to the seat mounting recommendation listed in the non-production section below. Any modifications must be professionally installed.

**2. Non-production or purpose-built racing vehicles** - This set of guidelines pertains to vehicles that lack a standard Vehicle Identification Number (VIN) issued by the factory, or have undergone extensive modifications from their original form or configuration. This category includes but is not limited to tube frame cars, formula/prototype cars, kit cars, home-built vehicles, among others lacking a VIN number.

- a. All drivers must adhere to the Octane Time Attack Rules and Regulations pertaining to the mandatory use of appropriate helmets and attire.
- b. It's REQUIRED that drivers wear an SFI or FIA-certified head/neck restraint device.
- c. DRIVERS IN CONVERTIBLE OR OPEN-TOP VEHICLES MUST UTILIZE ARM RESTRAINTS.
- d. Octane Time Attack requires that all non-production vehicles are equipped with a valid SFI or FIA-certified 5 or 6-point racing harness. The Schroth ASM 4-point Anti-Submarine Harness is considered the only acceptable 4-point alternative.
- e. Drivers are strongly advised to install a current FIA-approved head containment seat or FIA equivalent, such as right-side and left-side containment nets, in their vehicles.
- f. In relation to seating arrangements, Octane Time Attack strongly recommends that drivers adhere to the certification standards and mounting provisions outlined in one of the two rule sets specified below:
  - i. SCCA Club Racing General Competition Rules (GCR) section 9.3.19 subsection C



ii. National Auto Sports Association (NASA) General Rules and Regulations section 15.17

**By participating in the Octane Time Attack event, all participants agree to abide by these rules and any additional instructions provided by the event organizers. Failure to comply may result in penalties, disqualification, or exclusion from the event without a refund. Octane Time Attack reserves the right to modify the rules before or during the event for safety or logistical reasons. If you have any further questions, please reach out to Octane Time Attack Staff. Contact information can be found at [octanetimeattack.com](http://octanetimeattack.com)**

